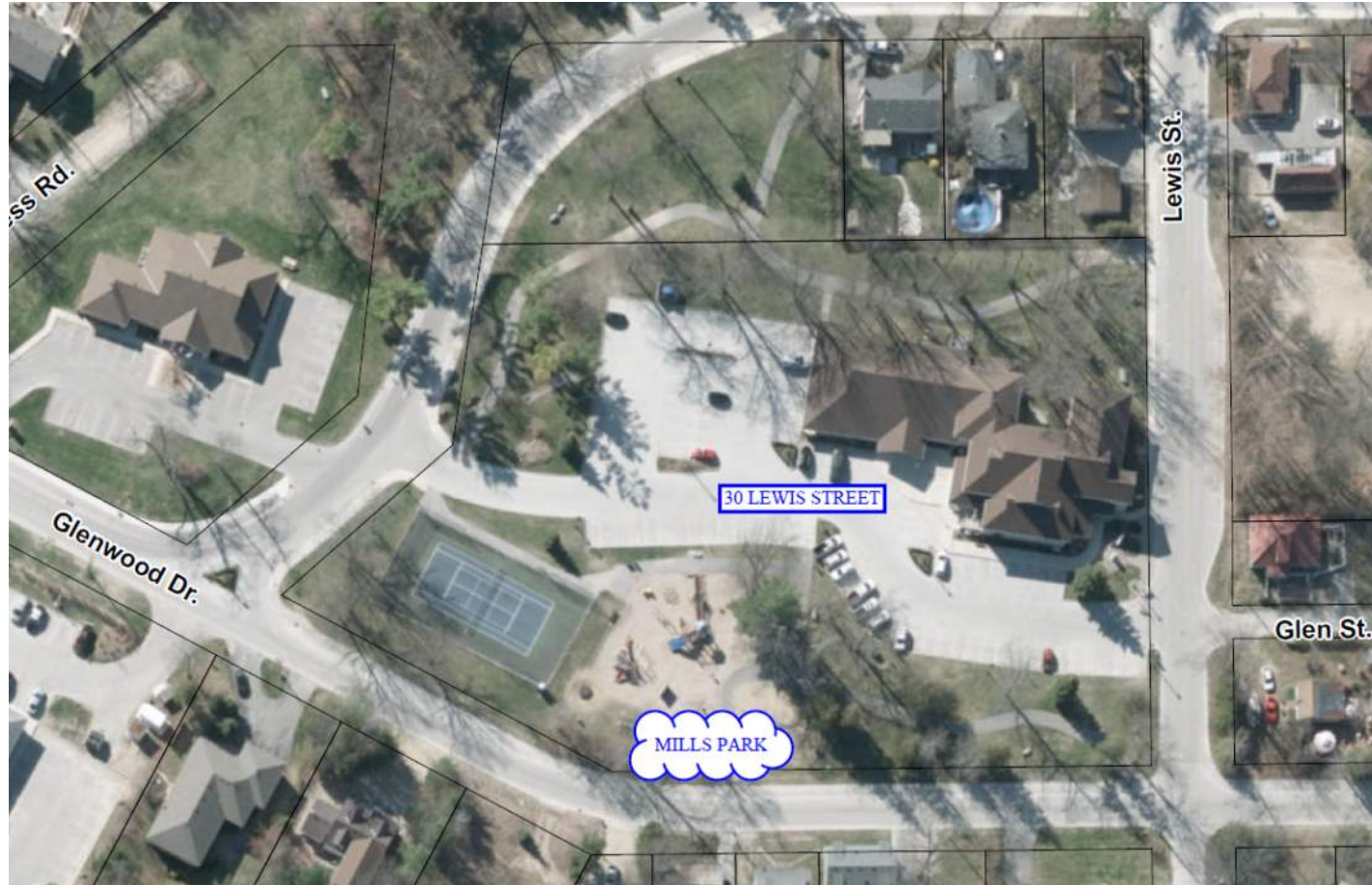




# Town Hall – Mills Park Playground Renewal

# Existing Conditions



Town Hall - Mills Park







Town Hall - Mills Park



# O.Reg. 191/11: AODA – Integrated Accessibility Standards

## OUTDOOR PLAY SPACES

### Outdoor play spaces, application

**80.18** (1) This Part applies to newly constructed and redeveloped outdoor play spaces that an obligated organization, other than a small organization, intends to maintain and that fall within the description set out in subsection (2). O. Reg. 413/12, s. 6.

(2) The outdoor play spaces to which subsection (1) applies consist of an area that includes play equipment, such as swings, or features such as logs, rocks, sand or water, where the equipment or features are designed and placed to provide play opportunities and experiences for children and caregivers. O. Reg. 413/12, s. 6.

### Outdoor play spaces, consultation requirements

**80.19** When constructing new or redeveloping existing outdoor play spaces, obligated organizations, other than small organizations, shall consult on the needs of children and caregivers with various disabilities and shall do so in the following manner:

1. The Government of Ontario, the Legislative Assembly, designated public sector organizations and large organizations must consult with the public and persons with disabilities.
2. Municipalities must also consult with their municipal accessibility advisory committees, where one has been established in accordance with subsection 29 (1) or (2) of the Act. O. Reg. 413/12, s. 6.

### Outdoor play spaces, accessibility in design

**80.20** When constructing new or redeveloping existing play spaces that they intend to maintain, obligated organizations, other than small organizations, shall,

- (a) incorporate accessibility features, such as sensory and active play components, for children and caregivers with various disabilities into the design of outdoor play spaces; and
- (b) ensure that outdoor play spaces have a ground surface that is firm, stable and has impact attenuating properties for injury prevention and sufficient clearance to provide children and caregivers with various disabilities the ability to move through, in and around the outdoor play space. O. Reg. 413/12, s. 6.

# TERMS OF REFERENCE

Design, Supply & Install Inclusive Playground  
at Town Hall – Mills Park



# Each proposal should include, at minimum, the following elements into their conceptual design submissions:

- An accessible play tower structure suitable for children 2 – 12 years old.
- The play tower must include but not be limited to:
  - Accessible ramp(s);
  - Sufficient space to manoeuvre a wheelchair including turnaround space;
  - Shade element(s);
  - Features that encourage a high level of inclusive play that focuses on physical accessibility, age and developmental appropriateness and sensory-rich stimulating activities;
  - The structure should include, at minimum, one double slide.
- A small separate play space for younger children that includes social, sensory and inclusive features.
- A wheelchair accessible merry-go-round suitable for children of all abilities with a specifically strategic seating area that leaves ample room for wheelchairs, including those without a wheel-locking mechanism.
- A net tower structure that is suitable for climbing, balance, coordination, motor planning and muscle development.
- A minimum of 4 swings (inclusive bucket swing and regular belt swings) and multi-person swing
- A four (4) person rocking motion see-saw.
- A small section for fitness playground equipment to replace those elements that have since been removed.
- A track ride / zip line or equivalent track system

# Successful Proponent – New World Park Solutions Inc.



Town Hall - Mills Park





**Mills Park**  
Wasaga Beach, Ontario

22-7911A.NEW

Sales Representative



Equipment Manufacturer



POST & COMPONENT

- Beige
- Dark Brown
- Brown
- Forest Green

ROTOMOLD PLASTIC

- Forest Green
- Green
- Brownstone
- Beige

2-COLOR PLASTIC

- Forest Green-Sand
- Beige-Gray
- Dark Brown-Sand

ECO-ARMOR

- Brown

ROPE

- Green





**Mills Park**  
Wasaga Beach, Ontario

22-7911A.NEW

Sales Representative



Equipment Manufacturer







## Mills Park

Wasaga Beach, Ontario

22-7911A.NEW

Sales Representative



Equipment Manufacturer







## Mills Park

Wasaga Beach, Ontario

22-7911A.NEW

Sales Representative



Equipment Manufacturer







## Mills Park

Wasaga Beach, Ontario

22-7911A.NEW

Sales Representative



Equipment Manufacturer







## Mills Park

Wasaga Beach, Ontario

22-7911A.NEW

Sales Representative



Equipment Manufacturer





# Accessibility Features

## Accessibility

This park meets and exceeds all CAN/CSA-Z614 Annex H and AODA requirements. As seen in the matrix below.

ADA SCHEDULE	Total Elevated Play Activities: 16		Total Ground-Level Play Activities: 18	
	Accessible Elevated Activities	Accessible Ground-Level Activities	Accessible Ground-Level Play Types	
Required	8	5	3	
Provided	16	17	9	

✓ CSA Z614-20





# Schedule

- Detail design to be finalized over the next week
- Purchase Order to be issued
- Manufacturing Process (8-10 weeks)
- Delivery Summer 2022
- Installation
- Project Completion Late Summer / Early Fall 2022

# Questions?