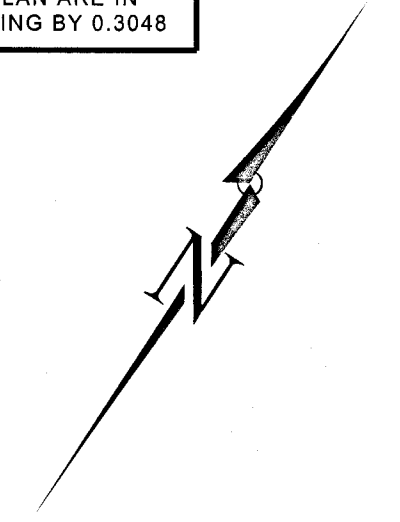
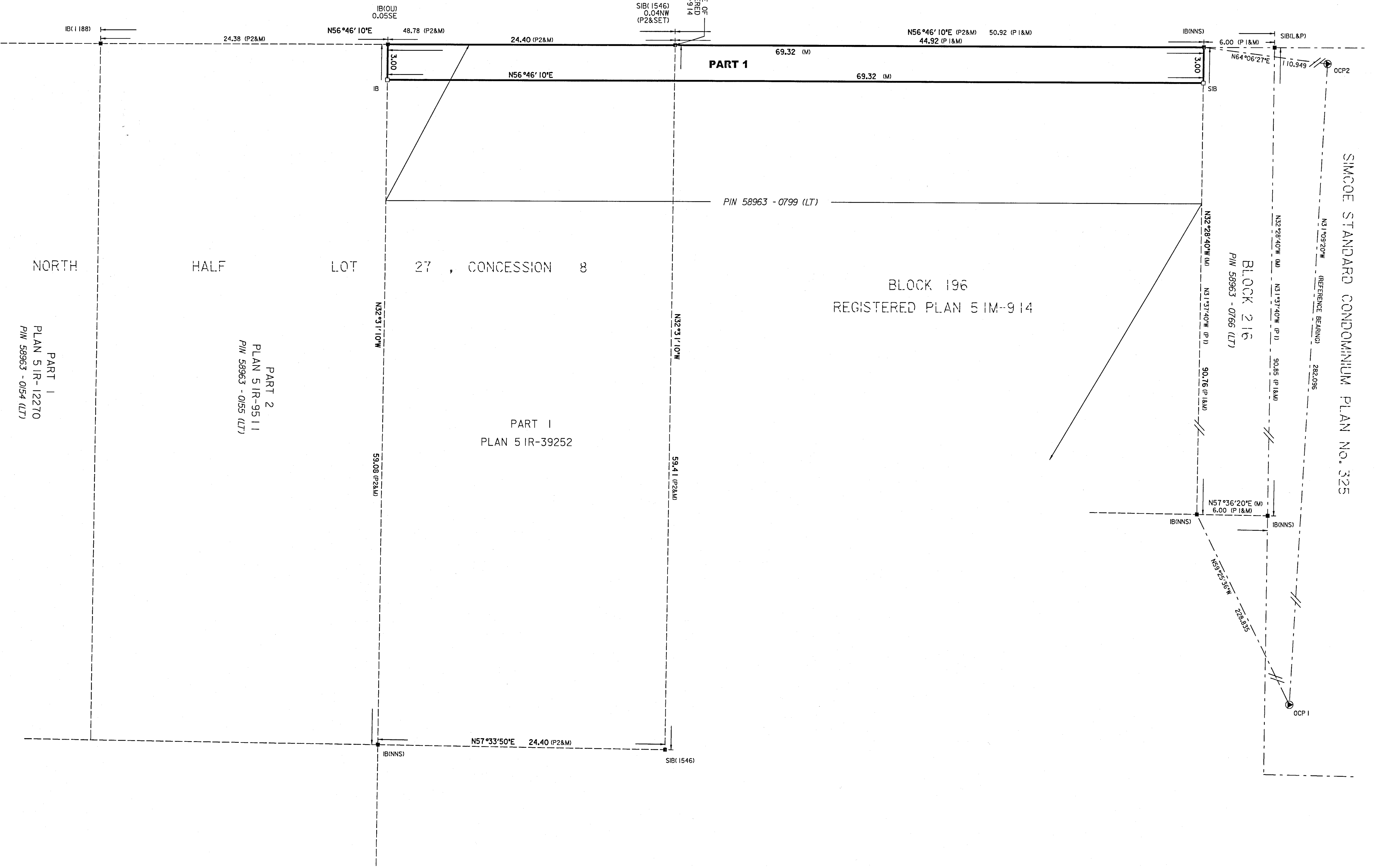


METRIC
DISTANCES AND COORDINATES SHOWN ON THIS PLAN ARE IN METRES AND CAN BE CONVERTED TO FEET BY DIVIDING BY 0.3048



ROAD ALLOWANCE BETWEEN CONCESSIONS 8 AND 9 KNOWN AS RIVER ROAD WEST

PIN 58331-0002 (LT)



I REQUIRE THIS PLAN TO BE DEPOSITED UNDER THE LAND TITLES ACT.
DATE: SEPTEMBER 28, 2022

PLAN 51R-43109
RECEIVED AND DEPOSITED
DATE: September 30/22
Dunning
REPRESENTATIVE FOR THE LAND REGISTRAR FOR THE LAND TITLES DIVISION OF SIMCOE (No. 51)

PART SCHEDULE			
PART	LOT / BLOCK	PLAN / CONCESSION	PIN No.
1	PART OF BLOCK 196 AND PART OF LOT 27	REGISTERED PLAN 51M-914 AND CONCESSION 8	PART OF PIN 58963-0799 (LT)

PLAN OF SURVEY OF
PART OF BLOCK 196 REGISTERED PLAN 51M-914
AND
PART OF THE NORTH HALF OF LOT 27, CONCESSION 8
(GEOGRAPHIC TOWNSHIP OF FLOS)
TOWN OF WASAGA BEACH
COUNTY OF SIMCOE

SCALE 1 : 200

NOTES

BEARINGS ARE UTM GRID, ZONE 17, NAD83(CSRS)(2010) AND ARE DERIVED FROM THE OBSERVED REFERENCE POINTS OCP1 AND OCP2 BY REAL TIME NETWORK AND STATIC OBSERVATIONS.

DISTANCES SHOWN ON THIS PLAN ARE GROUND AND CAN BE CONVERTED TO GRID BY MULTIPLYING BY THE COMBINED SCALE FACTOR OF 0.99962322.

CONTROL MONUMENTS SHOWN HAVE BEEN TIED TO THIS SURVEY TO THE URBAN ACCURACY PER SEC. 14(2) OF ONTARIO REGULATION 216/10.

COORDINATES BSHOWN CANNOT, IN THEMSELVES, BE USED TO RE-ESTABLISH CORNERS OR BOUNDARIES SHOWN ON THIS PLAN.

PLANTED MONUMENTS SHOWN HEREON ARE IB'S UNLESS SHOWN OTHERWISE.

LEGEND

P1	REGISTERED PLAN 51M-914
P2	PLAN 51R-39252
M	MEASURED
OU	ORIGIN UNKNOWN
NNS	NANFARA & NG SURVEYORS INC.
1188	C.A. SEXTON LIMITED
1546	RUDY MAK SURVEYING LTD.
L&P	LLOYD & PURCELL LTD.
ORP	OBSERVED REFERENCE POINT

SURVEYOR'S CERTIFICATE

I CERTIFY THAT:

- THIS SURVEY AND PLAN ARE CORRECT AND IN ACCORDANCE WITH THE SURVEYS ACT, THE SURVEYORS ACT AND THE LAND TITLES ACT AND THE REGULATIONS MADE UNDER THEM.
- THE SURVEY WAS COMPLETED ON THE 15th DAY OF SEPTEMBER, 2022.

DATE: SEPTEMBER 20, 2022

[Signature]
ONTARIO LAND SURVEYOR

THIS PLAN OF SURVEY RELATES TO AOLS SUBMISSION FORM NUMBER 2176183.

nanfara & ng surveyors inc
PROFESSIONAL LAND SURVEYORS

#1 ASHBRIDGE CIRCLE, UNIT 9 WOODBRIDGE, ONTARIO, L4L 3R5
TEL: 905.856.5923 FAX: 905.856.7092 nnsurveyors@gmail.com

CHECKED BY: JN	DRAWN BY: FYN	REV. DATE: 2022/09/28	W.D. 20130509R3	REV. A
----------------	---------------	-----------------------	-----------------	--------

COORDINATES (UTM), ZONE 17, NAD 83 (CSRS) (2010)

STATION	NORTHING	EASTING
ORP1	4930059.754	579059.023
ORP2	4930301.071	578913.125