



## **Town of Wasaga Beach** **Emerald Ash Borer Management Strategy**

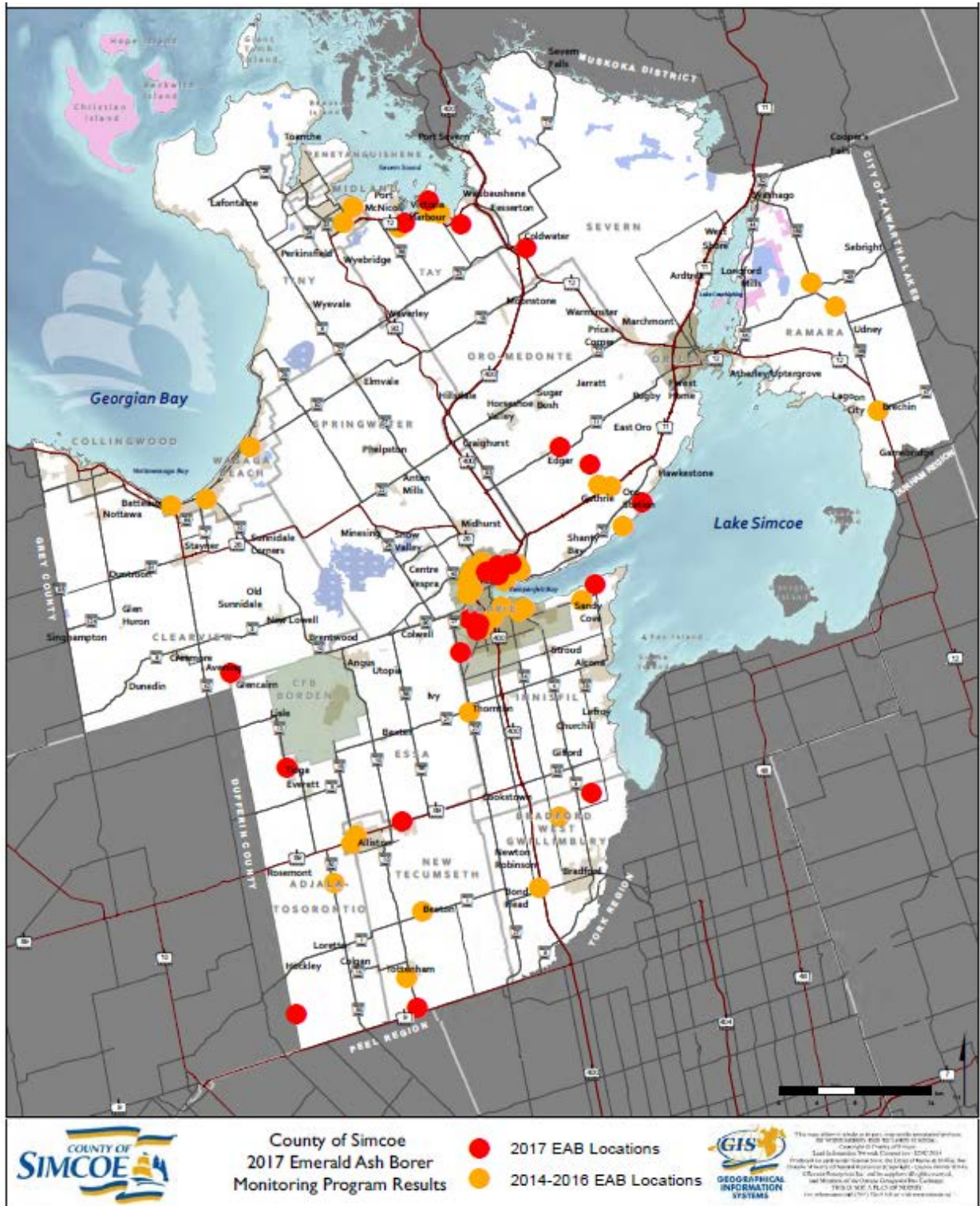
In Wasaga Beach, we are committed to managing our resources wisely. This includes caring for and protecting our natural environment.

The Emerald Ash Borer (EAB) is an invasive insect that is threatening to kill all of the ash trees in Wasaga Beach. Experts believe this tiny metallic green beetle, native to China and Eastern Asia, was accidentally introduced to North America from imported wood packaging and crating material. Since it was first discovered in the Detroit and Windsor areas in 2002, EAB has killed tens of millions of ash trees in Ontario, parts of Quebec and the northeastern United States.



Ash trees are widespread on both public and private property throughout Wasaga Beach. There are approximately 5,300 ash trees situated on municipal lands, including road allowances, trails, parks and woodlots.

The Emerald Ash Borer is present in Wasaga Beach and has quickly spread across Simcoe County. EAB targets all species of ash trees.

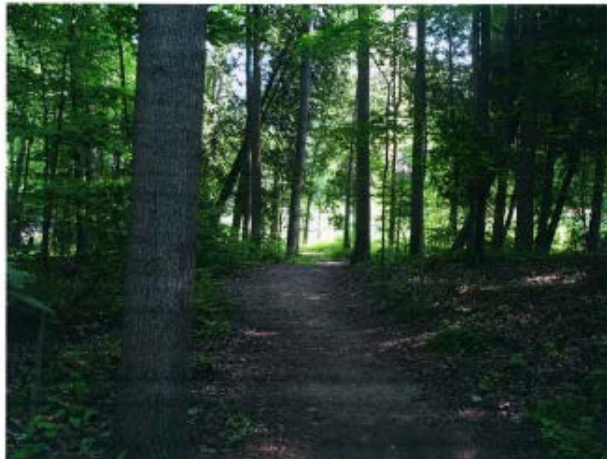


## Emerald Ash Tree Management Strategy

EAB will have a significant impact in our community. To help manage this invasive insect, Wasaga Beach engaged the services of a consultant in 2015 to develop an **Emerald Ash Borer Tree Management Strategy** for trees on public property, which aims to reduce the significant aesthetic, environmental and financial impacts associated with the EAB. As part of the Strategy, a physical inventory of all public ash trees was completing and identified an approximate management burden of 5,300 ash trees throughout the community.

### TOWN OF WASAGA BEACH EMERALD ASH BORER STRATEGY

Town of Wasaga Beach  
County of Simcoe  
P/N 15-2920  
April 2016



Prepared for: Gerry Reinders, Manager, Parks and Facilities



**Skelton Brumwell**  
& ASSOCIATES INC.

ENGINEERING PLANNING ENVIRONMENTAL CONSULTANTS  
93 Bell Farm Road, Suite 107, Barrie, Ontario L4M 5G1  
Tel: 705-726-1141 Toll Free: 877-726-1141  
mail@skeltonbrumwell.ca www.skeltonbrumwell.ca

Town's Park staff are monitoring ash trees along streets and in parks to ensure that infested trees are removed before they become hazardous.

**Phase 1 of the Town's ash tree removal strategy** will continue in 2018, including the removal of ash trees within the municipal road allowances. Public ash trees will be marked along road allowances with a 3"-4" round yellow or florescent green dot. These trees will form part of the tree removal tender slated for the Spring of 2018.



### **Tree Planting Strategy**

A new tree of a different species will be planted in proximity to the recently removed ash tree or at a location in our parks or natural areas to help make up for lost ash trees in woodlands and forests.

### **How to identify an ash tree?**

Ash trees can be identified by looking at the leaves, which are compound and contain five (5) to eleven (11) finely toothed leaflets.



The branching pattern of ash trees is also distinctive because the buds and stems grow directly opposite from each other along branches.



The bark on mature trees is tight and rough and often has a diamond pattern.



In addition, ash trees have seeds that are 'oar' shaped and hang down in clusters.



## Signs of Physical Damage

Primary signs of physical damage caused by the EAB include:

- Canopy dieback – the tree will have fewer and smaller leaves from previous years



- 'S' shaped tunnels beneath the bark were larvae have fed. Over the summer months, emerald ash borer beetles lay their eggs on the bark of ash trees. When the eggs hatch, the larvae tunnel under the bark to feed. These tunnels cut off the flow of water and nutrients causing the tree to die.



- 'D' shaped exit holes in the bark from where adult beetles have emerged from the tree. These holes are very small, only 3-5 mm in size, and can be difficult to spot.



- Leaves with a ragged appearance caused by the feeding of adult beetles

Other indicators of EAB infestation might include cracks in the bark, shoots growing from the trunk or heavy seed production.

### **Private Property**

Ash trees on private property are the responsibility of the property owner. Once the tree is infested, it can quickly become hazardous and cause personal injury or property damage. If you have an ash tree on your property, you are encouraged to consult with a professional arborist. Local tree care professionals can be found online or in the yellow pages. Be sure to ask about options for tree protection, tree removal and tree replacements – and get multiple cost estimates for any tree work.

### **FOR MORE INFORMATION**

For more information about the Emerald Ash Borer, please visit <http://www.simcoe.ca/dpt/fbl/ash-borer>

Alternatively, please do not hesitate to contact the Parks Division in the Public Works Department at (705) 429-2540.